

iPortal2 Mouse Mover Quick Start Guide

GBK52984 V1.0

Introduction 3

Pairing iPortal2 with a PC or laptop 3

Pairing iPortal2 with an Apple iMac (OS X) 7

Using iPortal2 Mouse Mover 11

Mouse-click mode 11

Mouse-move mode 11

Introduction

The following instructions describe how to pair the iPortal2 and a PC or laptop. These instructions are based on the Windows XP operating system, but the principle will be similar for both Vista, and Windows 7.

To pair the iPortal2, your computer must have Bluetooth capability. If your computer does not have Bluetooth capability, then you can purchase a Bluetooth dongle to plug into a spare USB port. The minimum recommended Bluetooth version is 2.1.

Before you begin, ensure that the iPortal is connected correctly to the wheelchair, and then power up the Remote. The green status light of the iPortal2 will light up, and the Bluetooth's blue indicator will flash quickly for a few seconds (while initiating) and then slowly while not paired.

Pairing iPortal2 with a PC or laptop

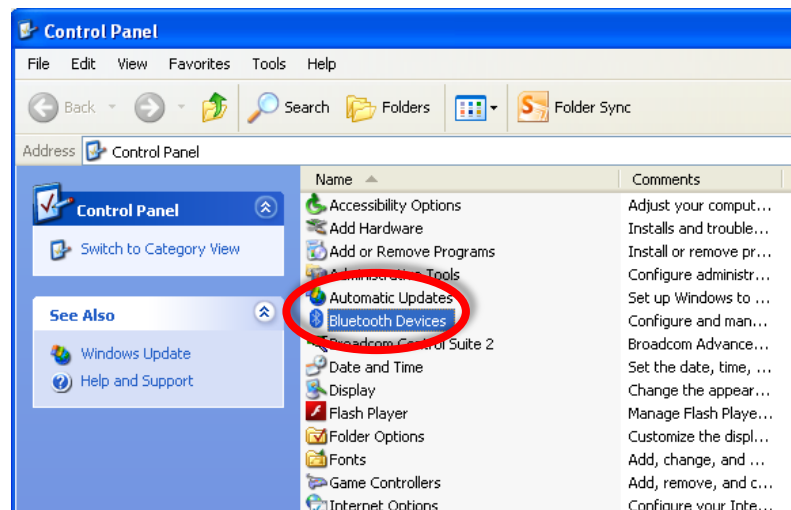
Step 1

From your PC or laptop:

Open the Control Panel:

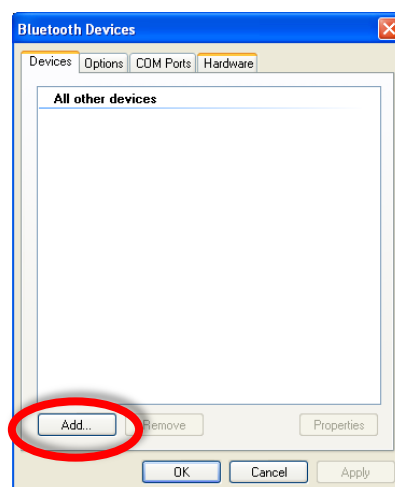
Start -> Control Panel

Select Bluetooth devices.



Step 2

In the **Bluetooth Devices** dialogue, press the **Add** button.



Step 3

In the **Add Bluetooth Device Wizard**:

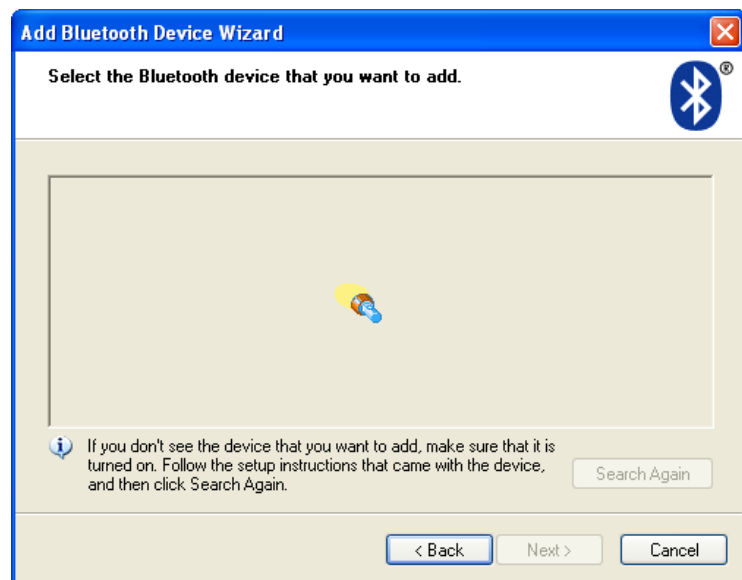
Check the checkbox **“My device is set up and ready to be found”**

Press the **Next** button



Step 4

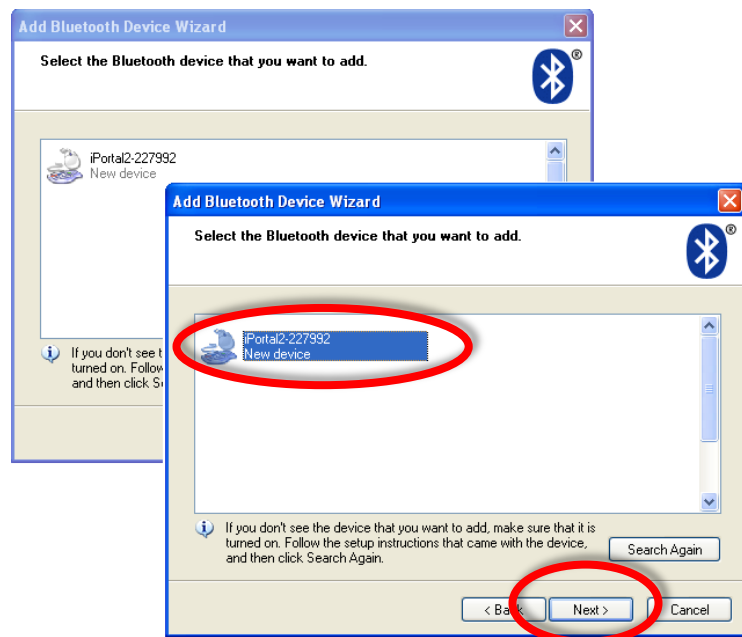
Wait while Windows searches for nearby devices.



Step 5

When the Wizard has discovered the iPortal2 device, select it and then press the **Next** button.

If the iPortal2 was not found, power-cycle the iPortal2, and then press the **Search Again** button.

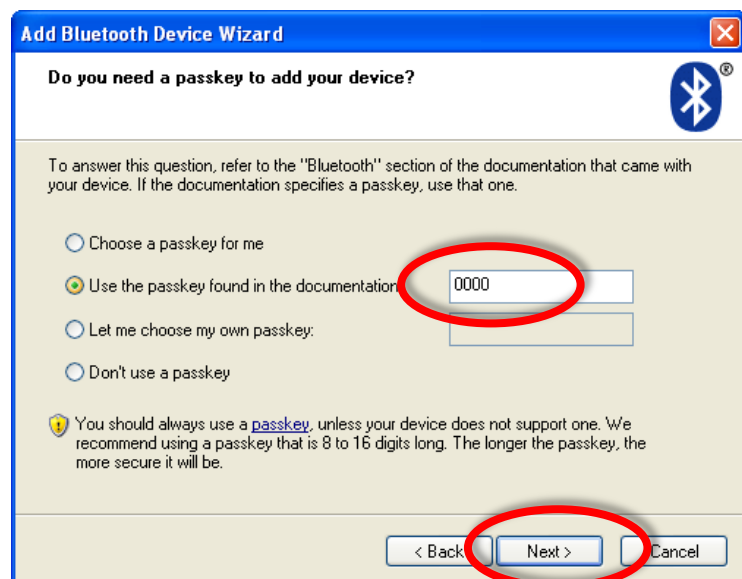


Step 6

When asked “Do you need a passkey to add your device”:

Click on the second radio button “Use the passkey found in the documentation”, and then type in “0000”, as shown right.

Press the **Next** button.



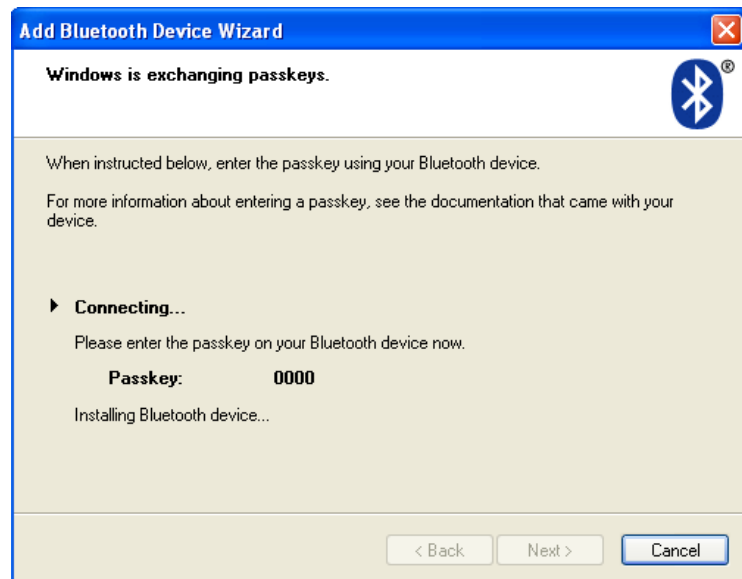
Note:

This step may not be shown in Vista and Windows 7, as newer versions of Bluetooth do not always require an exchange of passkeys. If this is the case, then, once connected, you will be shown the connection confirmation window, similar to that shown in Step 8.

Step 7

After entering the passkey, Windows will attempt to exchange passkeys with the iPortal.

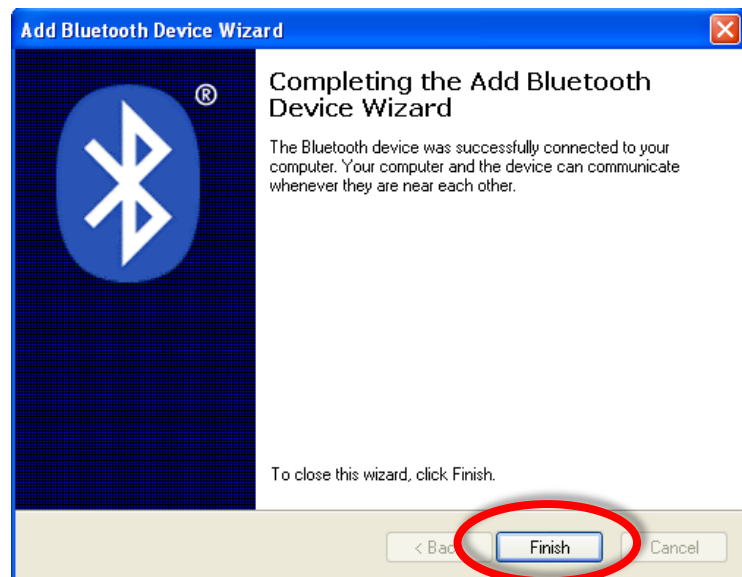
Wait until this succeeds.



Step 8

Once the passkeys have been exchanged successfully, Windows will display the Window shown right.

Press **Finish** to complete the set-up.

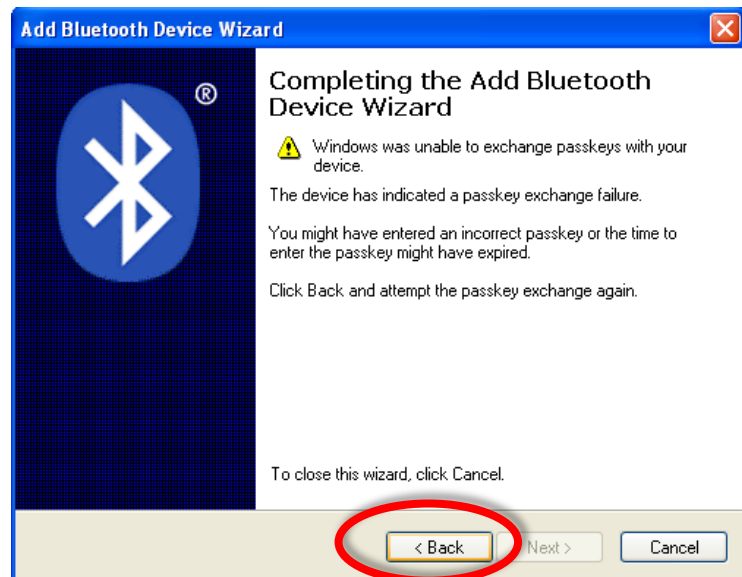


You are now ready to start using your Remote's joystick as a Mouse Mover.

Note:

If Step 7 does not succeed, you will be presented with the message (shown right) “Windows was unable to exchange passkeys with your device”.

Use the Back button to return to Step 6, and ensure that the passkey entered was “0000”, and then press the **Next** button to re-try the passkey exchange.



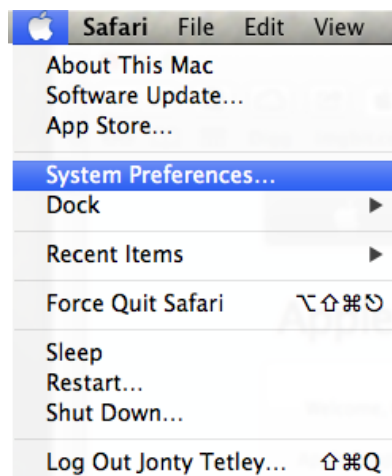
Pairing iPortal2 with an Apple iMac (OS X)

The following instructions describe how to pair the iPortal2 and an Apple Mac iMac or MacBook Air for use with the iPortal Mouse Mover. These instructions are based on the Mac OS X operating system 10.6 or later.

Before you begin, ensure that iPortal2 is connected correctly to the wheelchair, and then power up the Remote. The green status light of the iPortal2 will light up, and the Bluetooth’s blue indicator will flash slowly.

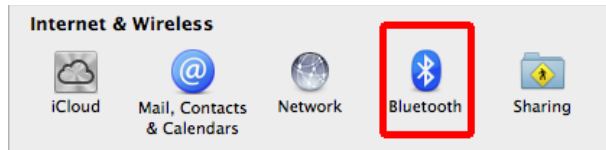
Step 1

From the Apple menu, open **System Preferences**.



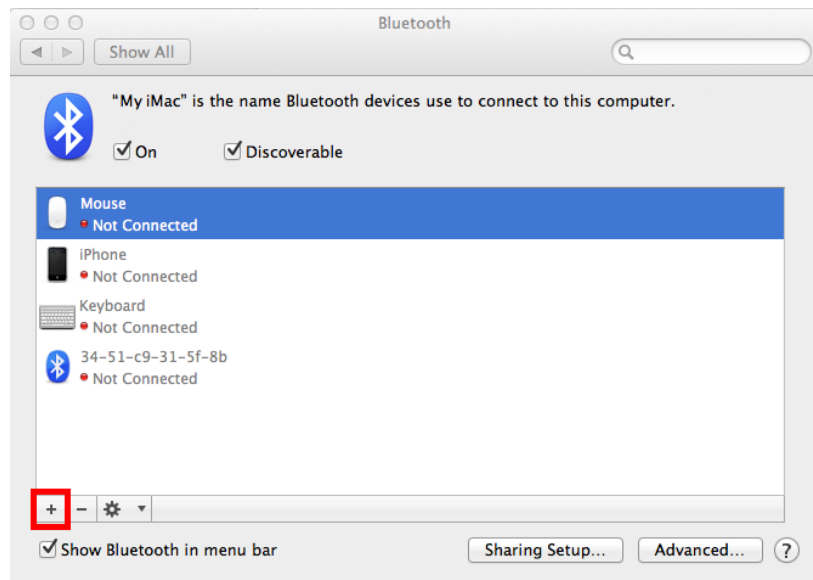
Step 2

Select **Bluetooth** settings from the **Internet & Wireless** & **Wireless** panel.



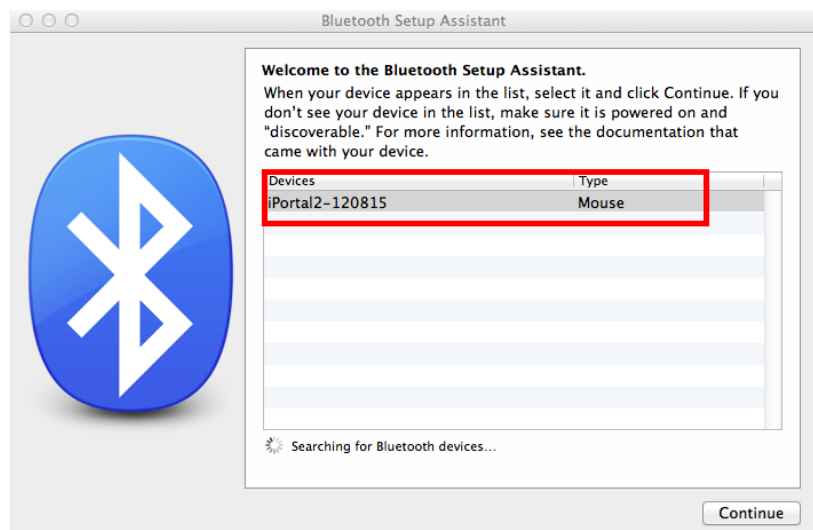
Step 3

Click on the + button to add a new device.



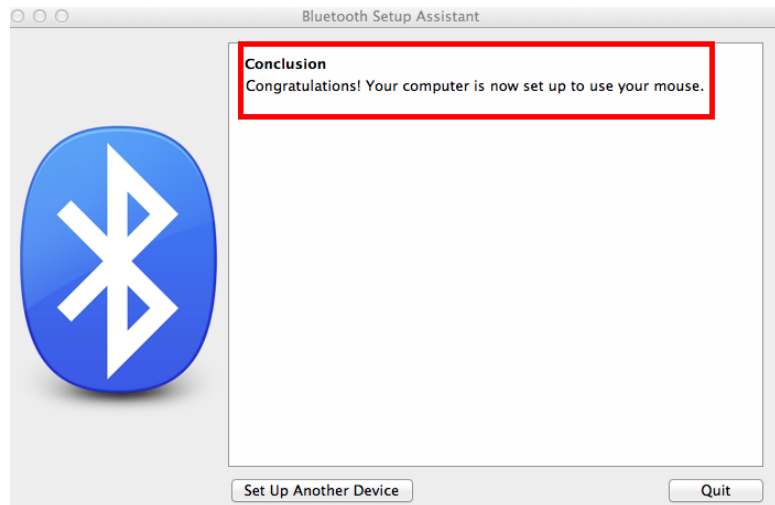
Step 4

Wait until the iPortal2 is displayed.
Sometimes this may require powering off and then on the iPortal2 unit.
When the iPortal2 is displayed, click on **Continue**.



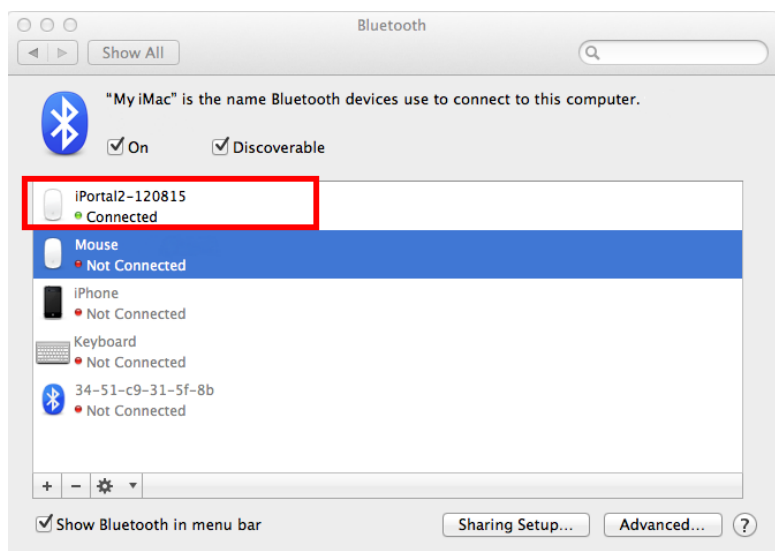
Step 5

Wait for the Bluetooth connection confirmation and then click on **Quit**.



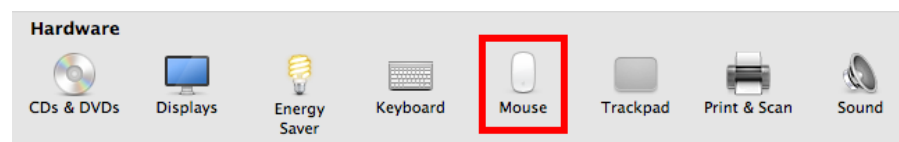
Step 6

The iPortal will now be listed as a Bluetooth device. Return to the System Preferences window by clicking on **Show All**.



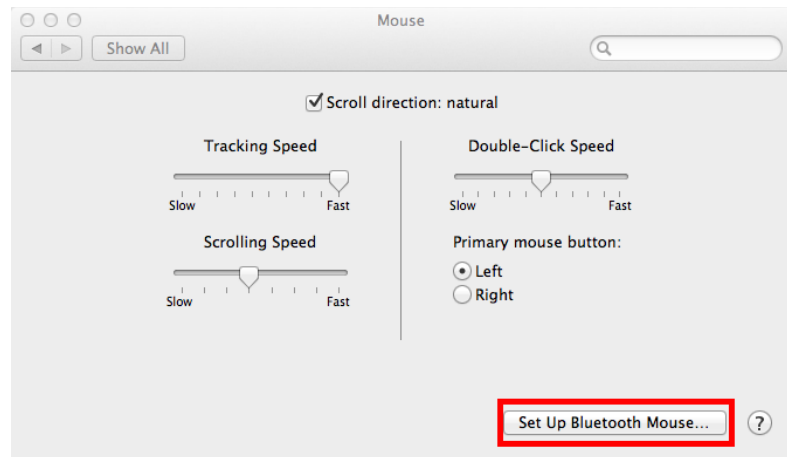
Step 7

Click on the **Mouse Settings**, in the Hardware panel.



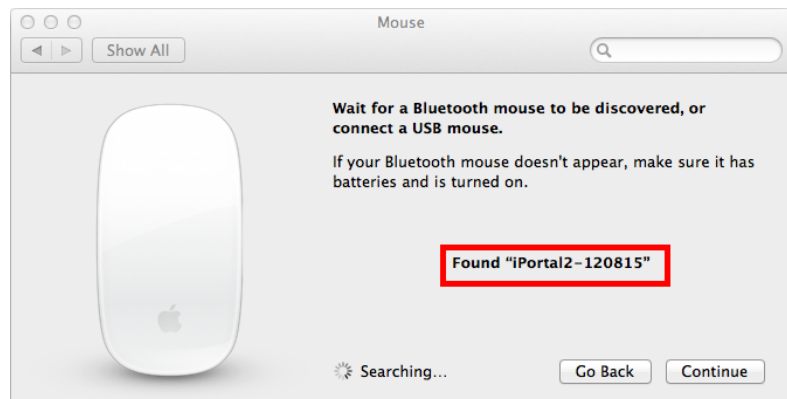
Step 8

Click on **Set Up Bluetooth Mouse...**



Step 9

Wait until the iPortal2 is listed, and then click **Continue**.



You have now completed the Bluetooth pairing process and you will be able to operate your iMac using Mouse Mover.

Using iPortal2 Mouse Mover

The Mouse Mover feature enables you to control the mouse pointer on your PC or laptop. It works in two modes: **mouse-click**, and **mouse-move**.

Mouse-click mode

The mouse-click mode is the Mouse Mover's default mode.

In mouse-click mode you can perform the following mouse operations:

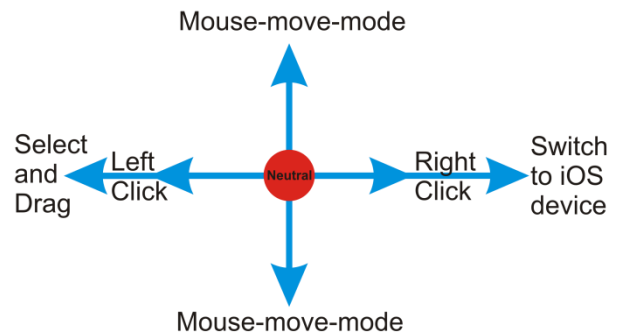
- left-click
- right-click
- select and drag
- switch to iOS device
- change to mouse-move mode

Left-click

Flick the joystick left to perform a left-click.

Right-click

Flick the joystick right to perform a right-click.



Select and drag

Move and hold the joystick left for two seconds to perform a select and drag operation.

Change to mouse-move mode

To change to mouse-move mode, start your mouse movement in either the up or down direction first, and then continue in any direction until the cursor is where you want it to be.

Mouse-move mode

In mouse-move mode, your controller's joystick controls the position of the mouse pointer on your PC or laptop.

Enabling and using mouse-move mode

To enable and use mouse-move mode, start your mouse movement in either the up or down direction first, and then continue in any direction until the cursor is where you want it to be.

Change to mouse-click mode

To revert to mouse-click mode, simply let the joystick rest in the neutral position for one second or more.

